

# **Guide to Plugging Cables into Your Avaya IP Phone**

*Missouri State University Networking and Telecommunications*

Icon Meanings and Finding the Model Type.....	<a href="#">1</a>
Connecting to the Wall.....	<a href="#">1</a>
Connecting to the Phone.....	<a href="#">2</a>
Need Help?.....	<a href="#">2</a>

## Icon Meanings and Finding the Model Type

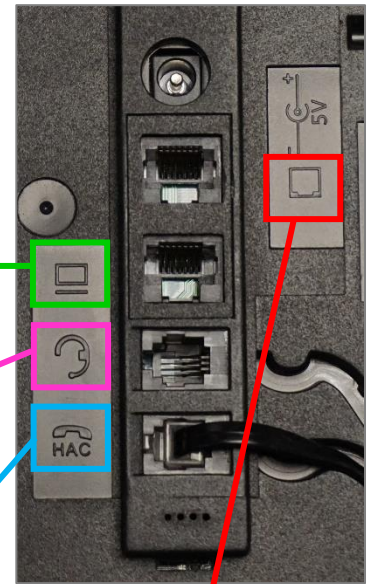


If you don't know what model phone you have, look under the handset.

This icon labels the port for the cable going to your computer.

This icon labels the port for a hands-free headset cable.

This icon labels the port for the handheld phone receiver.

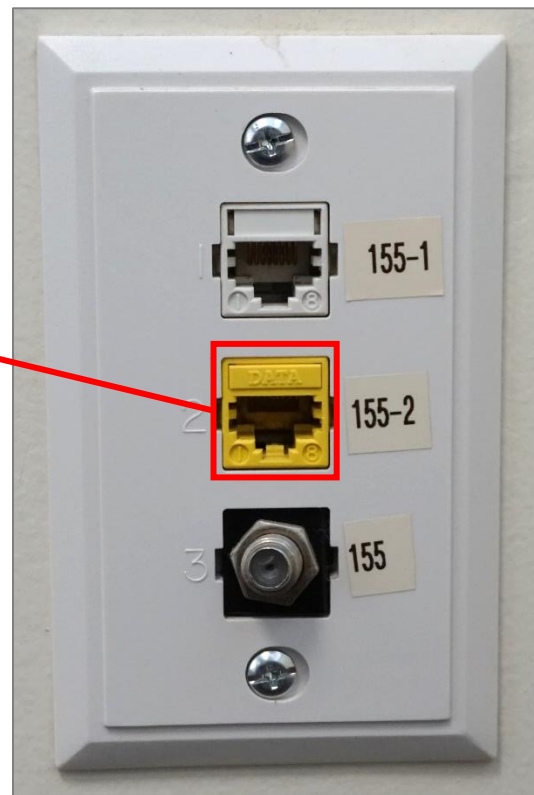


This icon labels the port for the cable going to the wall jack.

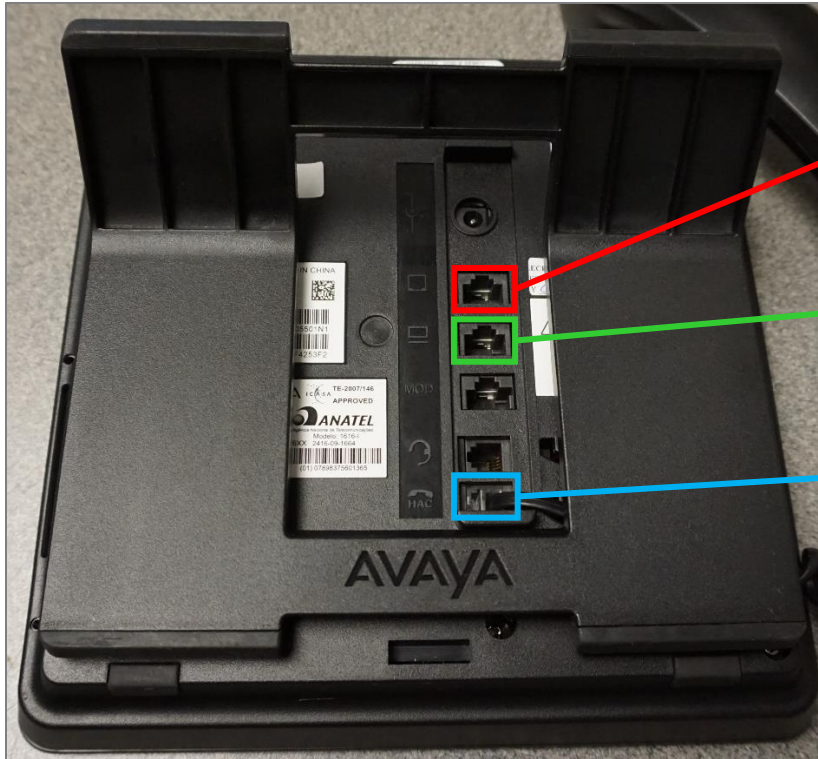
## Connecting to the Wall

When you go to plug the Ethernet cable into the wall, you will need to plug it into the appropriate jack. In most cases, you'll plug the cable into the orange or yellow jack like the picture to the right:

Make certain the Ethernet cable's release clip (see below) is on the bottom when plugging in the cable.



## Avaya 1608, 1616, 9608, 9611G, 9620, 9630, 9640 IP Telephone



Plug an Ethernet cable from the wall jack into the top plugin.

Plug an Ethernet cable from the computer into the second plugin.

Plug the phone handset into the bottom plugin.



### Need help?

Call Networking and Telecommunications: (417) 836-5100.

Email us: [Telecommunications@MissouriState.edu](mailto:Telecommunications@MissouriState.edu)

Find us online: <https://ntg.missouristate.edu>